

SEAL FUR POUCH



History

Inuit traditional clothing also included personal adornments. Accessories including earrings, necklaces, bracelets, headbands and belts among them. They believed these charms or adornments protected them from danger and helped with the hunt.” Your pouch is meant to give guidance, good luck, good health, protection, abundance, and even love to the individuals who carry them, some may wish to carry their medicine bag tailored especially for the wearer.

materials

Seal fur square (A)

Beading needle and thread

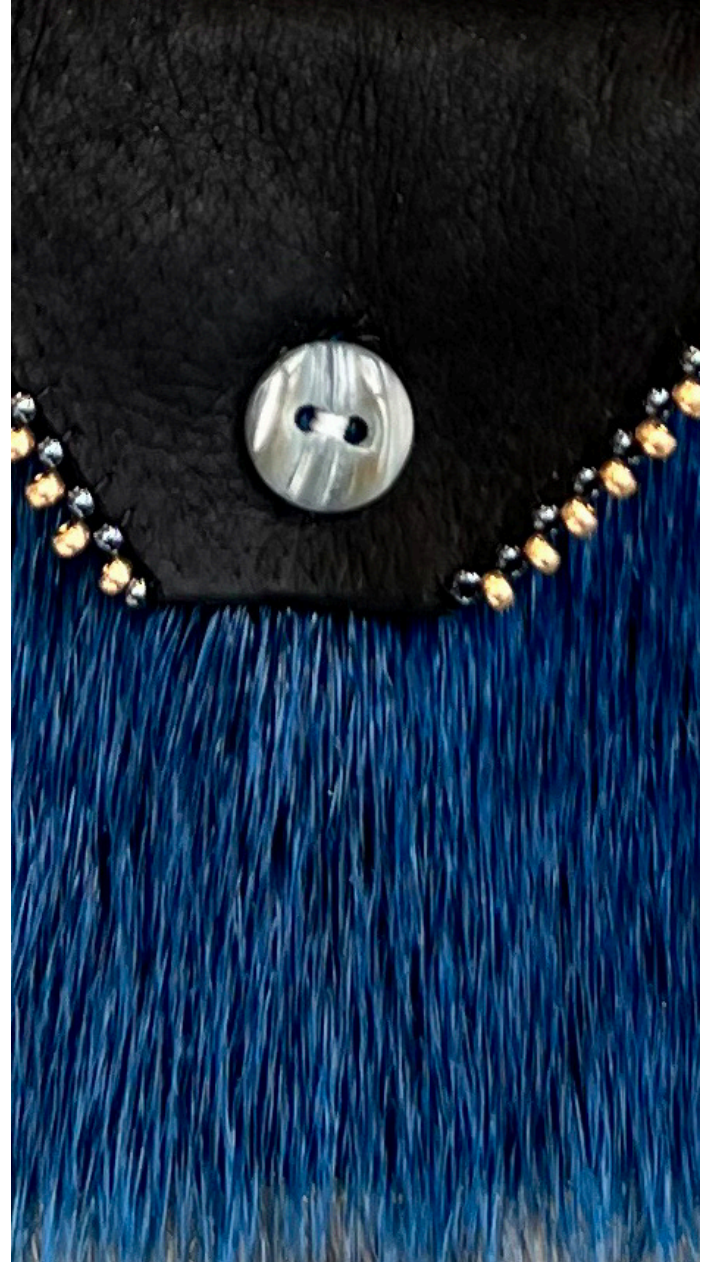
Beads

Button

Leather strap

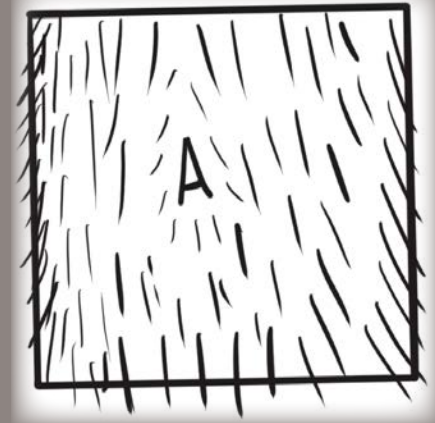
Hide (pig, deer, elk,) felt, fur or fabric
“backing” (B+B2)

Paper Clips to secure while constructing



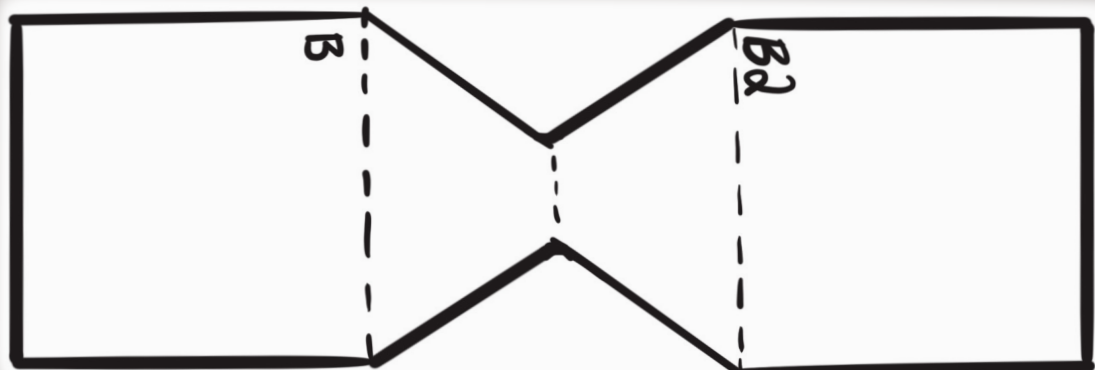
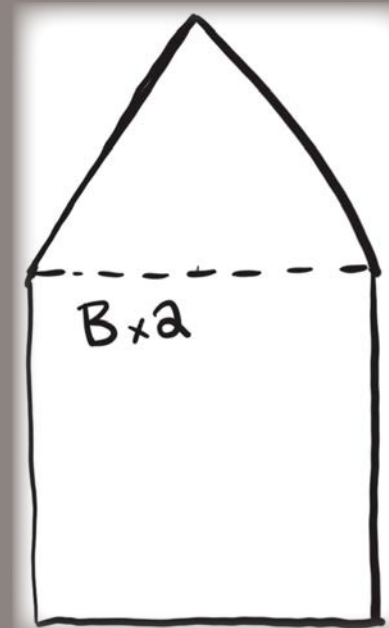
instructions

1. Cut your seal fur into a square (A).
Out of the hide/felt/fur/fabric of your choice,
cut a square with a flap (B).
You will want to cut another hide/felt/fabric to
match the square and flap size and share (B2).
The bottom square should be the same dimensions
as the seal fur square in image (A).



Note: In the photo examples B + B2 are one long
piece connected and folded at the pointed flat end
of the flap.

Choose either of these two patterns for the backing:



continued

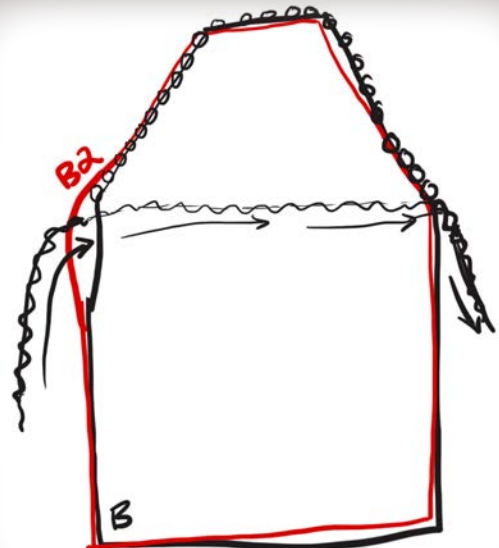
2. Secure the internal backing material (B) to align with the external backing (B2) in place with paper clips. The backing will be the inside of your pouch as well as the back of your pouch.

Helpful Tip: Pre-punch your holes in each piece of fabric before edging together, especially with thicker pieces of fabric for easier assembly. Be sure to have the side your material you prefer exposed



Begin to edge together (B) and (B2) with beads starting on the corner of your pouch flap. See “Edge Beading” booklet for more detailed instructions.

3. Edge with beads all the way around the top flap of your pouch, stopping when you get to the bottom half. At this point you can apply a leather cord between (B) + (B2) - along the line you want the flap to fold over.



4. Attach a button to the square of seal fur (A)
Then align and secure square (A) to the
bottom half of (B) + (B2)

For best results be sure the direction of the fur
is pointing away from the flap (downwards).

Continue to edge beads around the remainder
of the pouch.

Bead through or tightly around the leather
cord to secure in place

or

You can also attach the leather cord with a
few stitches on the inside of the flap fold of the
pouch.

5. To finish, fold the pouch flap over and make
a light mark where the button on the pouch is.

Measure, mark and cut a small button hole.



